

# Rang 3: Triail OSIE

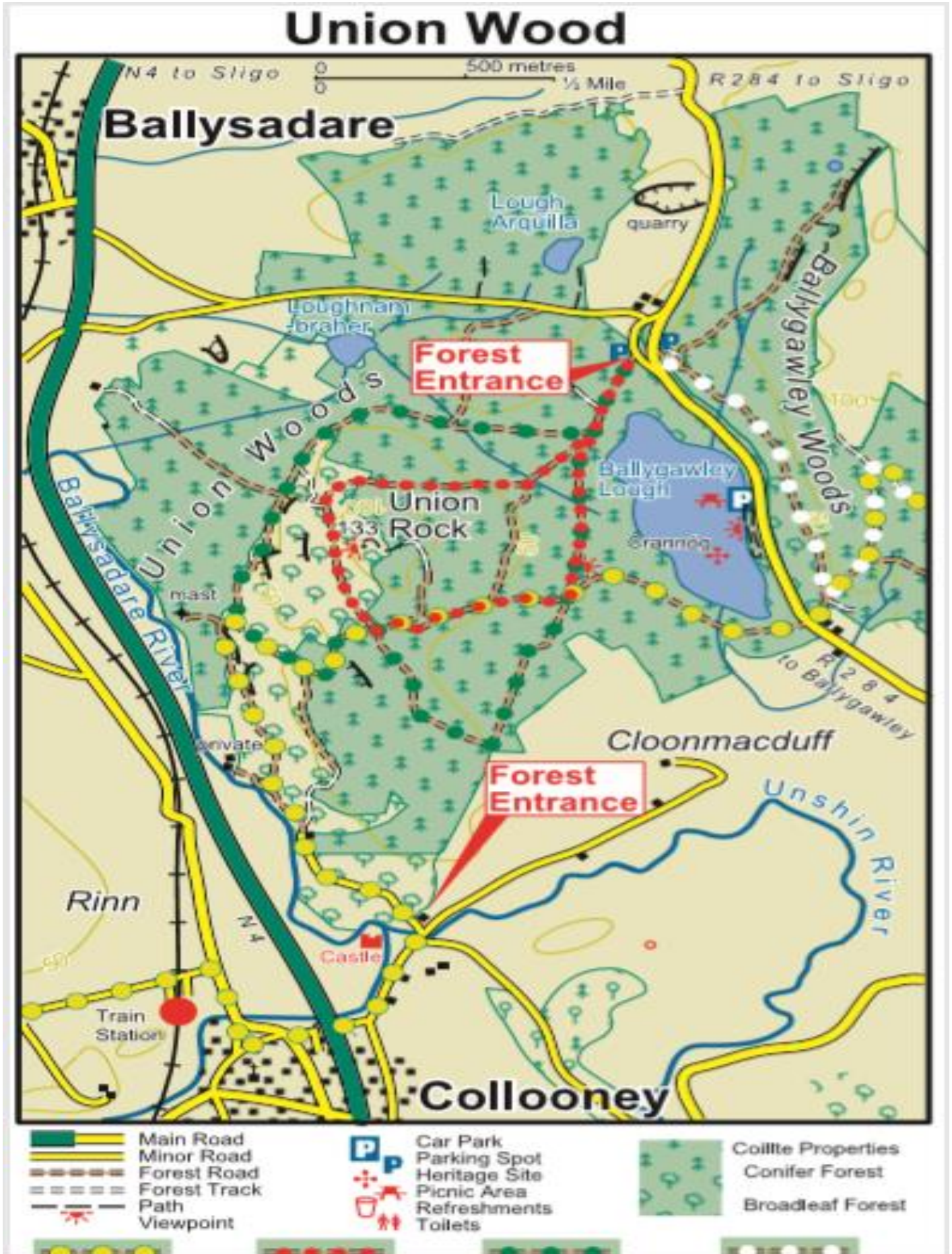
## Let's Explore Union Wood Cycle/Walk



Ainm/Ainmneacha



# Mapa de Choill na hInneona

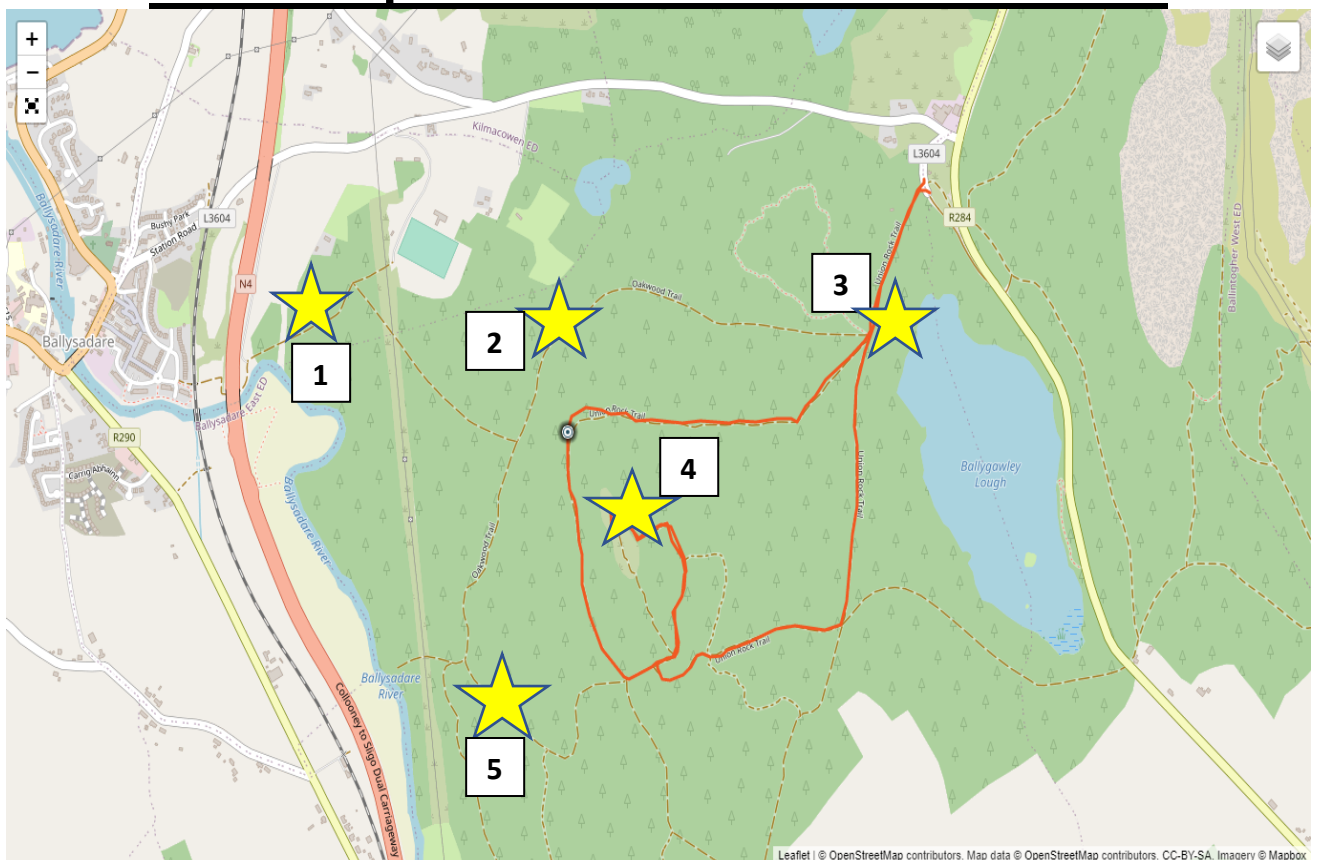


**Note for Parents:** You can begin the trail walk at the Ballisdare entrance which would allow you to follow the stops as laid out on the map. However, feel free to complete the trail in whatever order that you like.

## **Remember:**

- Bígí sábháilte! Éist le treoracha do thuismitheoirí.
- Lean na cosán, agus cóiméad dhá méadair idir tú féin agus daoine eile sa choill.
- Fán amach ón loch agus abhainn.
- Fán le do chlann i gcónaí.
- Bhain taitneamh as!! 😊

## **Aerial Map of Union Wood/ Coill an Inneoin**



### **Acmhainní do ghrúpa / Resources Needed:**

**Leabhrán - Booklet**

**Peann/Peann Luaidhe/Dathanna – Pencil and Colours**

**Ceamara/Fón Póca – Camera/Mobile Phone**

**Crúiscín beag/Small Jar or plastic container**

**Teirmiméadar/ Thermometer**

**Gloine formhéadúcháin/Magnifying glass**

**Eangach/Net**

**Miosúr téip / Measuring tape**

**Cailc / Chalk**

**Compás/Compass**

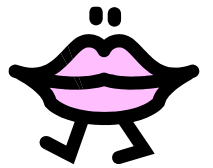


# Stad 1: Teach Siúil – Haunted House

There is an old abandoned house at the Ballisodare entrance to union wood.



1) Caint le do ghrúpa faoi na difríochtaí atá idir an phictiúir seo agus an teach anois.



2) Déan liosta do na difríochtaí a bhfeiceann tú idir an phictiúir agus an teach anois.

---

---

---

---

2) What do you think happened to the house?

---

---



www.shutterstock.com - 183021836

3) Take a photo of the house and draw a picture of the house when you return home.



5) What do you think might be inside the house?

---

---

---

6) What materials do you think were used to make this house?

---

---

---

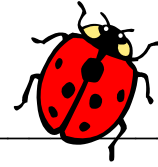
7) Look up, Can you see the sun? How can it help us find north, south, east and west?

---

---

8) What else could we use to find our orientation?

---



9) Find out what direction the house is facing. \_\_\_\_\_

---

10) What are shadows? Do they move? \_\_\_\_\_

---

---

---

11) Find a shadow, using a piece of chalk draw around the shadow, return to this area after the trail to see whether the shadow has moved 😊)

---

---

---

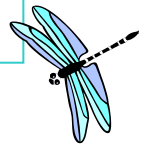
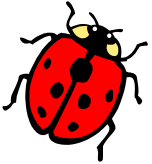


*Now use your map to find the next stop*

## Step 2 – Imeall an Choill

Many sections of Union Wood are enclosed to conserve and protect native Irish species of trees, plants and animals. Let's take a closer look and write down what you see inside and outside the enclosed sections of the wood. Take a rubbing of something you find interesting, a piece of stone or a plant maybe and discuss it with your group.

Pictures or rubbings (don't forget to label them!).



1) What did you see?

---

---

---

Using your magnifying glass investigate whether you can see any insects or bugs close to the fences, if so use your jar to capture and carefully observe the insects with your group.

\*Remember to place the insect back carefully as we do not want to disturb them from their natural habitat.

Draw a picture of the insect/bug you found.

## Stop 3- Loch Baile Uí Dhálaigh

*Now let's walk close to the lake, be carefully not to get too close now!!!!*

**Now stop, close your eyes and listen.**

a) What can you see on the lake and in the lake?

---

---

b) What can you smell?

---

---

c) Have you noticed any other birds today? \_\_\_\_\_



---

---

---

d) When you return home find the Irish for the following birds

1) Swan=

2) Duck=

3) Heron=

4) Pheasant=

5) Any others you may have found

---

e) What other activities might take place on this lake?

---

---

---

---

---

**\*\*\*Note to parents; be careful walking to the top of Union Rock it can be slippy. Also it is important to tell your child to stay on the viewing platform as it is unsafe at the top of the rock.**





## Stad 4: On top of Union Woods



Congratulations on making it up to the top of Union Woods. You are standing on Union Rock. Soak in the incredible views of the Sligo landscape. Look at the information map from the viewing platform.

1) What mountains can you see?

---

---

2) What rivers, lakes and seas can you see?

---

---

3) What towns can you see?

---

---

4) Take a photo of the amazing views.

5) When you return home, find out why the forest is named Union Wood.

---

---

---

---

6) Have you seen any animals during your trail? What type of animals could you see on this trail?

---

---

---

*Check your map and move onto the next station.*

## **Stop 5- Sa Choill**



1) There are a number of different trees around us here.

a) Some are deciduous, meaning

---

---

b) Some are evergreen, meaning

---

---

c) How many different ones can you see?

---

---

d) Use your measuring tape and measure the diameter of a tree's trunk.

---



Pick some twigs and leaves of at least three species. Discuss them, the similarities and the differences and pick out at least two characteristics of each.

Tips: Look at the shape and colour of the leaves and feel them.

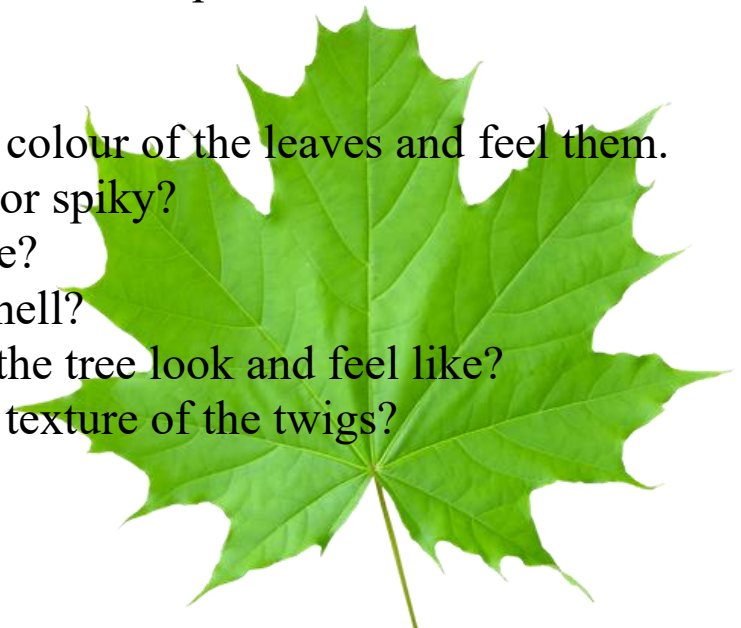
Are the edges smooth or spiky?

Are both sides the same?

Does the leaf have a smell?

What does the bark of the tree look and feel like?

What is the colour and texture of the twigs?



Draw your leaves and twigs here. If you need more space, use the other side of the page.

Place your thermometer into the soil surrounding a tree.

e) What temperature is the soil?

---

Plenty of Flowers and grasses are growing at the edge of the forest.

If you like you can also see what grasses and flowers you can find.



Sketch detail of grasses and flowers here.



## Time for a debate!!!

Statement 1: “Native Animals of this Forest need to be protected.”

Statement 2: “Recycling and refuse bins are would be a positive thing for this forest.”



Your group has five minutes to think of arguments.  
Write your main points down here – to help you remember!

Write your main points here.

---

---

---

---

---

---

---

---

---

---

Congratulations on completing the nature trail of Union Woods, if you have time return and see if your chalk shadow has moved. The reflection section below can be completed at home. Post some photos to Aladdin and let me know how you got on.



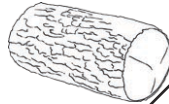
# Reflection: Using your senses

Name and draw a picture for each box.

Something smooth



Something rough



Something that makes a noise



Something round



Something yellow



Something that came from a plant



Something that has a smell



Something long



Something man-made



Something soft



Something you can eat



Something red

